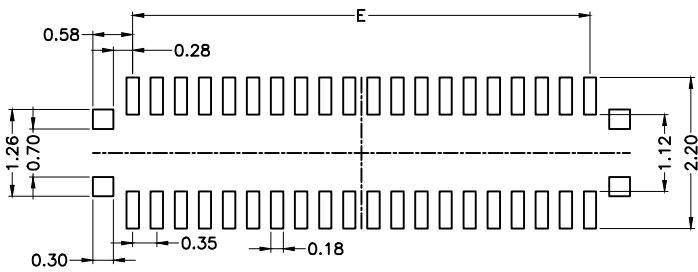
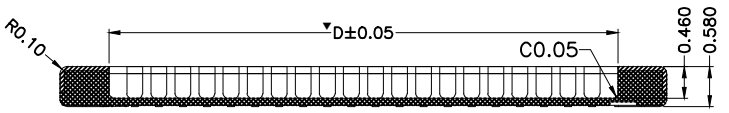
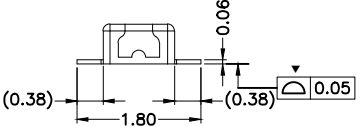
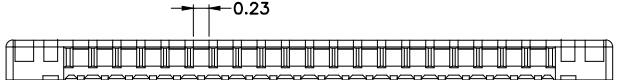
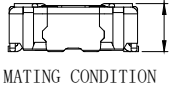
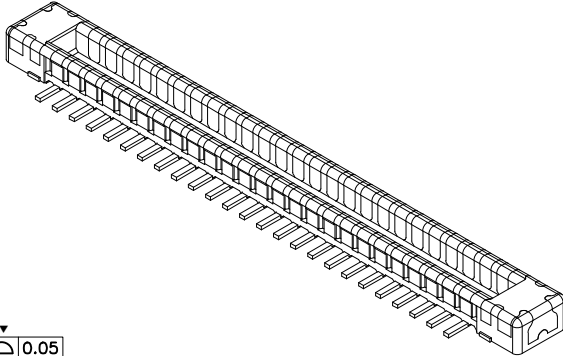
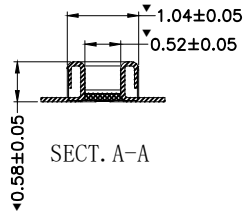
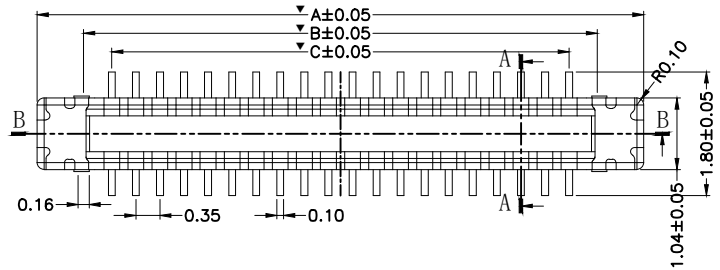
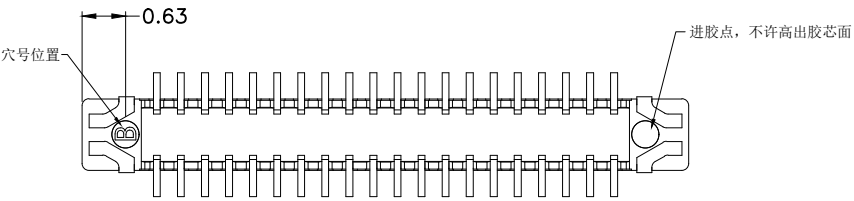


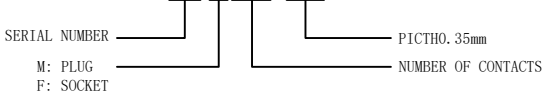
版本	变更日期	变更内容	责任人	备注
B	2022.11.28	盔甲修改	Liuzheng	
C	2023.10.28	扩PIN	Liuzheng	



MOUNTING LAYOUT
仅供参考



MIB-003MXXX-35



△	60	12.320	10.97	10.15	10.90	10.15
	50	10.570	9.22	8.40	9.15	8.40
	40	8.820	7.470	6.650	7.40	6.65
	38	8.470	7.120	6.300	7.05	6.30
	34	7.770	6.420	5.600	6.35	5.60
	30	7.070	5.720	4.900	5.65	4.90
	PIN数	A	B	C	D	E

- 备注:
1. 塑胶材质: LCP UL 94V-0 BLACK;
 2. 毛边最大0.03mm, 厚0.05mm;
 3. 产品不可有明显的缩水, 烧焦, 发白, 缺胶, 端子包胶等问题;
 4. 零件必须符合RoHS要求;
 5. ▼符号为QIP管控尺寸;
 6. 模穴号 (A, B, C,.....);
 7. 中转收料10K PCS/盘;
 8. 产品几何中心位置不能设顶出位;
 9. 端子接地片共面度在0.05mm以内, 正位度0.02mm以内;
 10. 进胶口采用底部细水口进胶;

X,±	X°,±	UNITS mm	NAME<INTENDED USE>	东莞市铭标电子科技有限公司
.X± 0.1	.X°± 1°	MAT'L	MANUFACTURE	
.XX± 0.05	.XX°± 0.5°	N/A	PART NO.<INTENDED USE>	TITLE: I/M
.XXX± 0.02	.XXX°±	FINISH	APPD:	DWG NO.:
THE GENERATED DRAWING IS BY ACAD, PROE OR IDEAS.DO NOT CHANGE BY HAND.			Q'TY	MIB-003MXXX
			N/A	CHKD:
			DR:	SCALE SHEET REV. 1:1 1/1 C