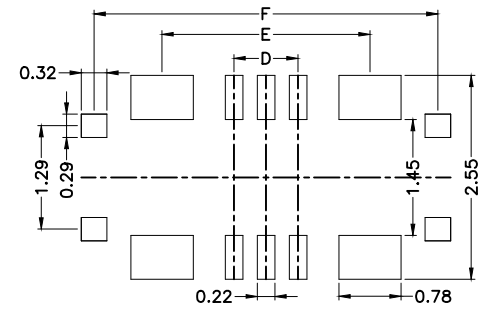
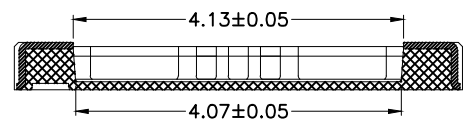
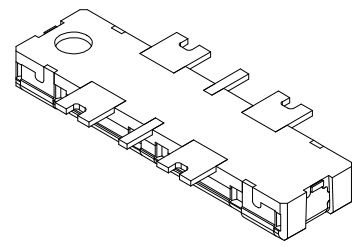
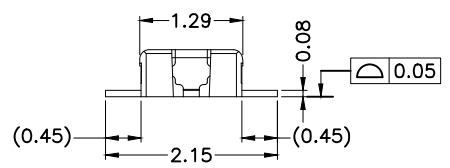
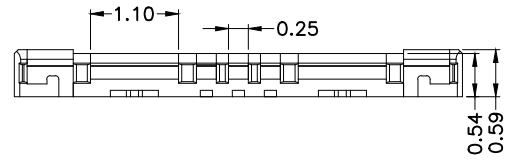
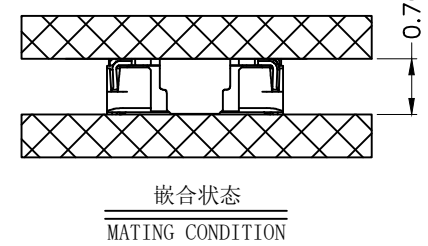
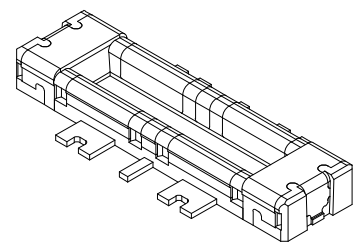
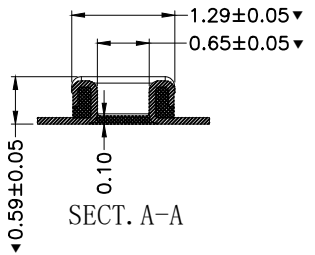
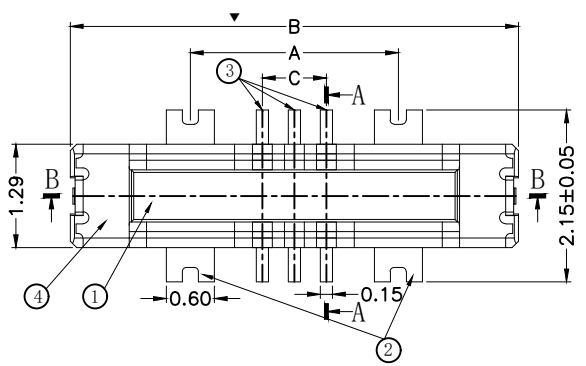
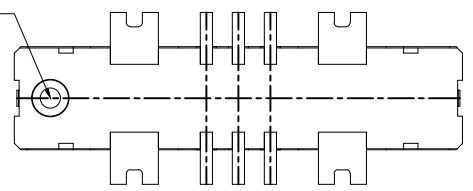


版本	变更日期	变更内容	责任人	备注
B	2023.04.21	扩PIN	Liuzheng	



进胶点, 不许高出胶芯面



MIB-007Mxxx

SERIAL NUMBER  
M: PLUG  
F: SOCKET  
NUMBER OF CONTACTS

- 备注:
1. 塑胶材质: LCP UL 94V-0 BLACK;
  2. 毛边最大0.03mm, 厚0.05mm;
  3. 产品不可有明显的缩水, 烧焦, 发白, 缺胶, 端子包胶等问题;
  4. 零件必须符合RoHS要求;
  5. ▼符号为QIP管控尺寸;
  6. 模穴号 (A, B, C,.....);
  7. 中转收料10K PCS/盘;
  8. 产品几何中心位置不能设顶出位;
  9. 端子接地片共面度在0.05mm以内, 正位度0.02mm以内;
  10. 进胶口采用底部细水口进胶;

TABLE

NUMBER OF CONTACT	A	B	C	D	E	F
2	1.8	4.8	-	-	1.8	3.5
4	2.2	5.2	0.4	0.4	2.2	3.9
6	2.6	5.6	0.8	0.8	2.6	4.3

NO.	DESCRIPTION	QTY.	MATERIAL	FINISH	REMARKS
4	HOLD DOWN	2	COPPERALLOY	NICKEL 80u" MIN. OVER ALL	CONTACT AREA : NICKEL (80u" MIN)
3	SIGNALCONTACT	N	COPPERALLOY	GOLD (3u" MIN.), NICKEL 80u" MIN. OVER ALL	CONTACT AREA : GOLD (3u" MIN)
2	POWER CONTACT	4	COPPERALLOY	GOLD (3u" MIN.), NICKEL 80u" MIN. OVER ALL	CONTACT AREA : GOLD (3u" MIN)
1	INSULATOR	1	LCP	--	--



X,±	X*,±	UNITS mm	NAME<INTENDED USE>	东莞市铭标电子科技有限公司
.X± 0.05	.X*± 1°	MAT'L	PART NO.<INTENDED USE>	
.XX± 0.02	.XX*± 0.5°	N/A	APPD:	TITLE: 客户图
.XXX± 0.015	.XXX*±	FINISH	CHKD:	DWG NO: MIB-007MXXX
THE GENERATED DRAWING IS BY ACAD, PROE OR IDEAS.DO NOT CHANGE BY HAND.			Q'TY	DR:
			N/A	SCALE SHEET REV. 1:1 1/1 B