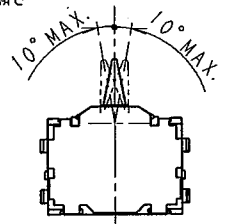
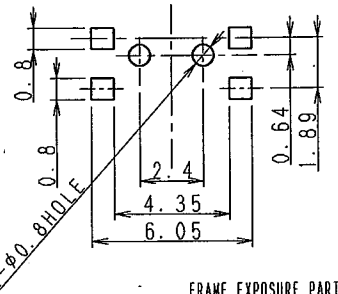


1 2 3 4 5 6

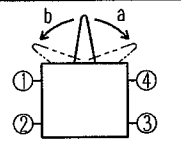
INCLINATION OF LEVER
レバ - の傾き



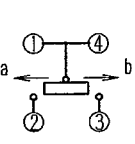
REFERENCE PATTERN FOR REFLOW SOLDERING
リフロー用パ ターン推奨寸法図



TERMINAL ARRANGEMENT
(SEE DIRECTION "A")
タンジ配列 (A方向より見る)

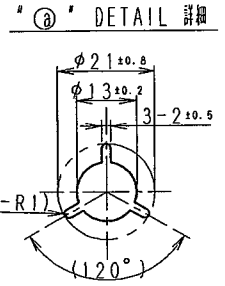
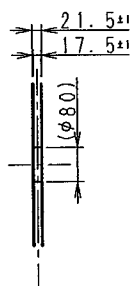
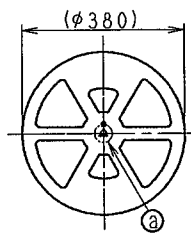


CIRCUIT DIAGRAM
回路図

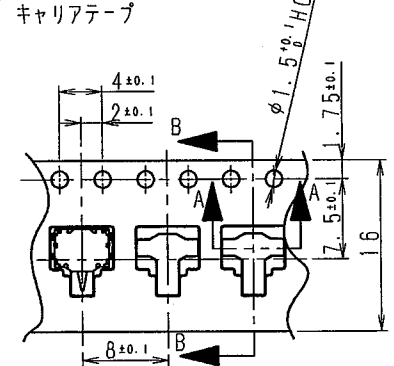


BACK GROUND 背景
PP03204

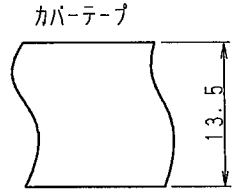
REEL リール



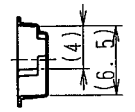
CARRIER TAPE
キャリアテープ



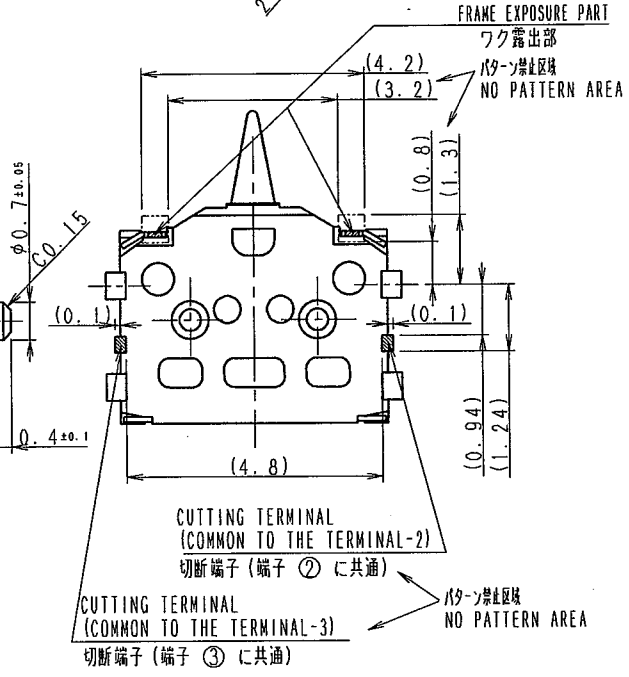
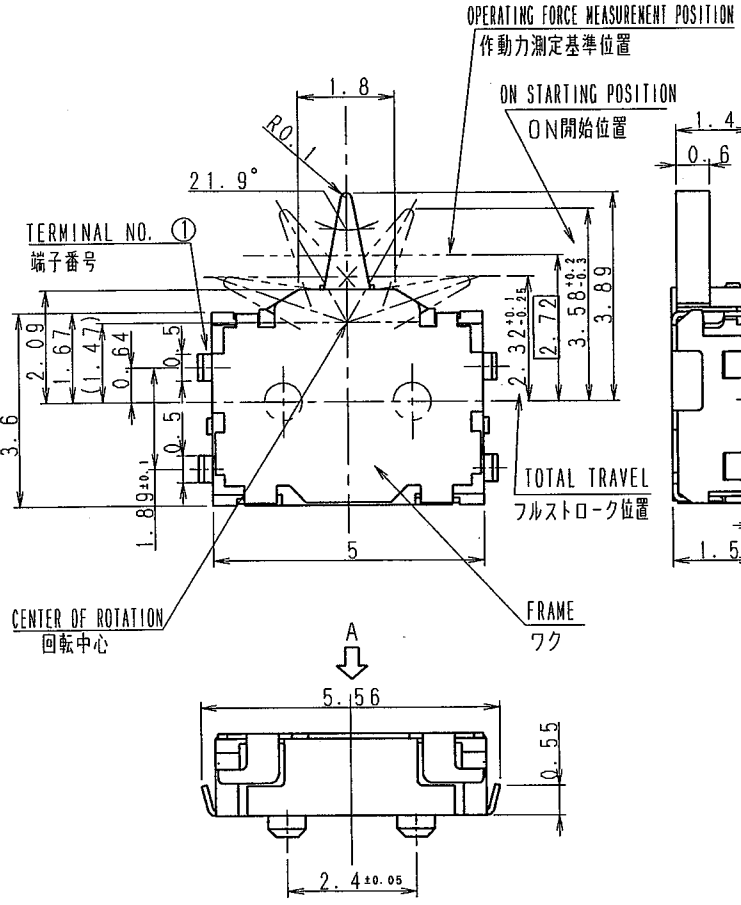
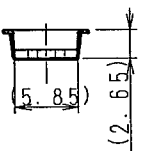
COVER TAPE
カバーテープ



B-B



A-A



TOLERANCES UNLESS OTHERWISE SPEC.		ZONE	SYMB	DATE	APPD	CHKD	DSGD
BASIC DIMENSION	TOLERANCE						
UP TO 4	±0.2						
ABOVE 4 TO 16	±0.3						
ABOVE 16 TO 63	±0.4						
ABOVE 63 TO 250	±0.5						
ABOVE 250	±0.7						
ANGULAR DIMENSION	±3°						

ALPS ELECTRIC CO., LTD.

DSGD. Mar. 17 '05	SCALE	MODEL No. (製品番号)
T. ITABASHI	TITLE	PRODUCT DRAWING (製品図)
CHKD. Mar. 17 '05		
T. KAWASE	UNIT	SSCM110100
APPD. Mar. 17 '05	mm	
T. KAWASE		

2. PACKING DETAIL OF TAPING REEL SHOULD BE IN ACCORDANCE WITH TAPE-S-007.
テープの仕様はTAPE-S-007による。

NOTES 1. OPERATING FORCE SHOULD BE MAX 0.35N.
注記 作動力は0.35N以下とする。

D

A

B

C

1 2 3 4 5 6

OR